

TUBBUT TATTLER

ISSN 2200 - 5243



July 2019

Tubbut Neighbourhood House

E-mail: tubbutnh@iinet.net.au

Phone: 02 64580295

Open Wednesday, Thursday and Friday

<http://www.tubbutnh.com> Like us on Facebook

Next deadline: July 24th

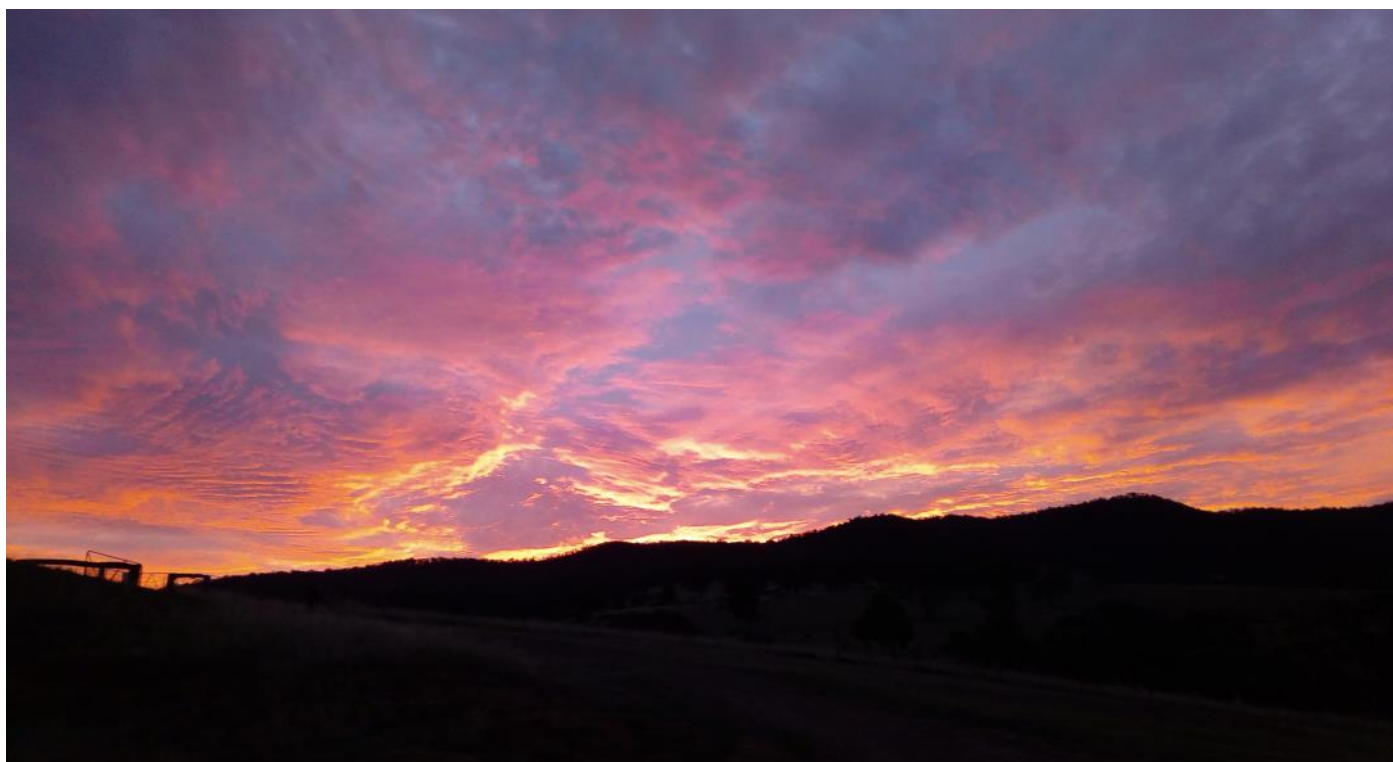


Photo taken by Nathan Phillips.

Classifieds	2	Working Dogs	11-12
TNH	3-4	Local History	13-16
Out and About	5	News from the Departments	17
What's On	6-8	News from the Shire	18-19
Wildlife	9	Calendar	20
From the Readers	10	Road Survey	21-22

CLASSIFIEDS

Orbost Solar and Electrical
Happy to come to our area and comes highly
recommended by the Tubbut Neighbourhood
House
Call Ben on 0434038395



WANTED

Old crockery of any colour except white, can
have patterns, can be broken.

Please contact Sue Collins 64580287 or the NH,
or leave at the Bonang Hall.

WANTED

Concrete Pavers—Please contact the Neigh-
bourhood House if you have any you wish to
part with.

ALSO Looking For ;

Outdoor Paint—Nathan Phillips is looking
for paint for his chook shed.

Ferrets—a local person wishing to buy fer-

Septic getting full?
Robert Hampshire will pump out your loo. Septic tanks,
porta-loos— no problems Truck has capacity to handle 2
tanks/trip Phone: 0417423983
Please keep your old glass bottles for Robert too as
he is a passionate collector.

Bobcat contractor for hire

Slashing, clearing, small earthworks, levelling,
preparation for sheds, carports, water tanks and
paving and clean ups

Ring Steve 0407190258 or email ste-
phenscroope@bigpond.com

Free Roosters

**I have 3 lovely 12 month old roosters to give
away either to keep your girls happy or for
the pot.**

**Contact Sue –64580287 or the
neighbourhood house.**



FOR HIRE

The Tubbut Neighbourhood House has the follow-
ing for Hire:

Trailer—\$5.00 per day

Wood Splitter—\$10.00 per day

*You can also borrow many of our books & gadg-
ets:*

Laminator, recording VHS to DVD player, Laptop,
tablet, digital photo scanner, convert photos, slides
or negatives to digital, record records to USB

Bates' Fencing & Machine Hire

- Large 90hp Compact Track Loader.
- Tracks ensure minimal ground disturbance.
- 900 mm Trencher ideal for pipe / cable laying
- 6 ft slasher for pad-
dock, scrub & advanced re-
growth clearing with tree pusher, ideal for fence line maintenance.
- 1600mm Road Broom / sweeper
- 300mm post hole auger
- Bucket, dozer blade , pallet & hay forks
- Fan assisted sprayer for difficult terrain
- Experienced operator
- Fully insured & GST registered
- Experienced in Rural fence design & construc-
tion



Available for cleaning (only)

Contact Natasha 64588162 or 0408477774

Tattler Contributions: We welcome your ar-
ticles, news, reports on local groups, photos from
local events, milestones, interesting stories, po-
ems, biographies, births, deaths, historical items,
and more. *We also welcome any letters to the
editors.*

The Tubbut Tattler is produced by the Coordinators of the Tubbut Neighbourhood
House which is funded by the Victorian Government. Material herein is the responsi-
bility of the authors and does not represent the views of the DVICG or Tubbut Neigh-
bourhood House unless stated. We welcome material from, and of interest to, people
in the border areas of East Gippsland and NSW.

Tubbut Neighbourhood House



Vale William (Bill) Stevens

It is with much sadness that we pass on the news of the death of Bill Stevens, Bill passed away with his loved ones by his side on the 13.6.2019 after a long illness.

Bill and Carmel have been long time residents of the Tubbut and Bendoc communities owning property in each of these areas.

Bill is survived by his loving wife Carmel, sons Warrick, Brad and Grant, daughter Miranda, daughter in laws Cara and Danae, son in law Adam.

Bill was beloved Pa to his 5 grandchildren Mitchell, Grace, Ava, Patrick and Harry.

Condolences to the Stevens Family from the Committee of management and staff of the Tubbut Neighbourhood House.

Tubbut Neighbourhood House

The community would like to extend their positive thoughts and prayers to Deb Foskey as she deals with her recent cancer diagnoses.

Deb was initially diagnosed with pneumonia and spent some time in hospital having tests which showed it was Stage 4 lung cancer. The good news is that the scans are showing no secondary cancers outside of the right lung and lining. The bad news is the fluid build-up in the lung which makes it hard to breathe hasn't been controlled by the surgery she had in Melbourne so more surgery and a permanent tap will probably be needed to syphon of the fluid. Deb is waiting on tests that will outline a treatment plan which will hopefully slow the cancer which can be done as an out patient in Bairnsdale.

While Deb is keen to stay connected to Cabanandra it is likely she will only be able to do some short visits over winter, although is hopeful that in the warmer months, once things have settled, she can come back for longer stints. In the meantime current thoughts are that moving to Orbost might be on the cards. Deb is definitely hoping to stay as involved in all the stuff she does up here from wherever she is.

Many people have been asking how they can help, Eleni has suggested donating to East Gippsland Environment on her behalf or donating to the moving to Orbost fund instead of flowers.

Cards, letters, emails, calls, etc. are all being gratefully received and returned as her energy allows. In the time when the actual steps become clear there will be a list of skills and stuff needed for anyone wanting to offer some time either to prepping the Orbost house or upkeep of the Warm Corners home.



Out and about

Wamboin Games 2019

On Saturday 26th of May, Amber Butterworth travelled to Bungendore to compete in the Wamboin Mounted Games. Amber was part of a team called the Mix Ups, which was made up of riders from Murrumbateman, Bungendore, Canberra Lakes and Delegate Pony Clubs. Most of the riders in the Mix Ups team, met for the first time on the morning of the competition.

After some overnight rain, the day of the competition was cool and slightly windy but the weather held and an enjoyable time was had by all. It was a good opportunity to catch up with old friends and forge some new friendships. Everyone was happy to share information and Amber has come home with some new techniques to share



Amber and her pony Anzac



The Mix Ups

DPC had their rally on Sunday 2nd June. The morning session consisted of flat work and the afternoon session consisted on mounted games for the up and coming mounted games in Bungendore. Shania Caldwell and Lydia Jamieson both represented Delegate Pony Club on Sunday at the Cobargo gymkhana. Both girls were in the 10 and under 13 advanced group and had a fun and successful day. They rode together in the riding pairs where they placed first. Lydia won E grade AM7 and Shania placed in both the AM7 and AM2 E grade courses. Shania and Lydia finished off their day by participating in the rescue relay. Lydia was the 10 and under 13 Age Champion for the day. Congratulations to both girls. A huge thanks to Cobargo Pony Club for a well organised and fun day.



Delegate Pony Club



What's On



Accidental counsellor Workshop



WHEN
Tuesday 13 August 2019
9.15am for 9.30am start to 4.30pm

WHERE
Bombala RSL
156 Maybe Street, Bombala

WHO
Community members wanting to support others

COST FREE

TO REGISTER
Contact Louise Roser on 4474 8410 or email
lroser@coordinare.org.au

Supporting the 'accidental counsellors'

As community members we often find ourselves providing support to friends and neighbours who are experiencing difficulty and emotional stress. We want to help, but how should we respond?

This FREE 1 day workshop aims to provide participants with a practical framework and skill set that enables them to respond with clarity and confidence.



Places for this FREE workshop are limited and registration is essential.

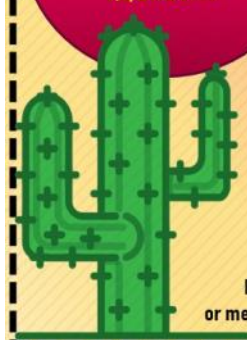


Gather your amigos and get ready for a feast!

All you can eat Mexican Buffet \$20
tacos, burritos, nachos...

Delegate Country Club
Saturday 3rd August 6pm

Tequila, Coronas, Michelada!
Salud!



Bookings appreciated! Call/text 0407 089 677
or message [facebook.com/delegate-country-club](https://www.facebook.com/delegate-country-club)

Christmas IN JULY

Date: Saturday 20th July

Venue: Delegate Country Club

Time: 7:00pm

Cost: \$55

Celebrate Christmas in July with friends and a fantastic winter evening out!
Three course Christmas dinner including a welcome glass of wine on arrival to get into the spirit of the evening.
Cooking by talented chef **Gill van Mastrigt**.
Christmas cheer will spread with some wonderful food, wine and company!

LIMITED SPACES and bookings are **ESSENTIAL**, reserve your place now!
Contact Rebecca Kading for bookings on 0407 089 677
or delegatecountryclub@gmail.com

Grazing Management

With Dick Richardson



TOPICS WILL INCLUDE:

- Increasing sheep and cattle profits by running a lower cost business.
- 'Making more with less' by increasing pasture utilization, increasing pasture growth and increasing the duration of the season.
- Using grazing tools such as simple feed budgeting, stocking density and rest and priority grazing & Sabbath paddocks.

Dick Richardson is an internationally recognized leader in the practice of natural grazing to improve soil depth & health, water retention increased biodiversity and animal production. Dick developed a life-long passion for ecological farming growing up on the land. He ran sheep and cattle in conjunctions with wildlife on Richardson Ranching, a 7,000 ha livestock business.

ENSAY

Tue 6th of August 2019
10am - 3.30pm

BAIRNSDALE

Wed 7th of August 2019
10am - 3.30pm

ORBOST

Thu 8th of August 2019
10am - 3.30pm

Lunch Provided

RSVP by 2/8/19 to Emma Orgill on 0400 467 921 or emma.orgill@fevl.org.au



This project is supported by Far East Victoria Landcare and the East Gippsland Landcare Network, through funding from the Australian Government's National Landcare Program and East Gippsland Catchment Management Authority.

What's On

July School Holiday Activities at Cooma Library



MONDAY 8 JULY

School holiday movies – bookings essential
10:30am and 2pm
Please see library staff for session movie titles



MONDAY 15 JULY

School holiday movies – bookings essential
10:30am and 2pm
Please see library staff for session movie titles

WEDNESDAY 10 JULY

NAIDOC celebrations with famous Ngarigo/Yuin artist Cheryl Davison

- 10:30am Morning tea
- 11am Launch of TRAKZ Art Exhibition
- 11:30am Indigenous Dreaming Storytelling, everyone welcome.
- 2pm Indigenous Australian Craft, bookings essential!



THURSDAY 11 JULY

10am to 12pm LEGO Play
Bookings essential!

TUESDAY 16 JULY

10:30am School holiday craft
Keep the birds happy and make a bird feeder!
Bookings essential

WEDNESDAY 17 JULY

10:30am Preschool Story Time
All about Penguins
No need to book, all welcome!



FRIDAY 12 JULY

Comic Book Day

- 10:30am Make a superhero outfit
- 11:30am How to draw cartoon faces
- 12:30pm Superhero lunch
- 1:00pm Superhero kids movie

Bookings essential for this event!



THURSDAY 18 JULY

10am to 12pm LEGO Play
Bookings essential!



(02) 6455 1730

61 Vale Street, Cooma NSW 2630

Monday to Friday 9:30am to 5:00pm, Saturday 9:30am to 1:00pm



Join the Winter Reading Club

@ Snowy Monaro Regional Library

Winter Reading Club Challenge

1. Curl up in front of the fire with a nice hot chocolate and **read** some cool books!
2. **Record** your reading on the attached list of your choice and **return** it to Cooma Library, Bombala Library, the Mobile Library or Snowy Mountains Neighbourhood Centre.
3. Receive a certificate and go in the draw to win a new **Lenovo Tab E7 7" 16GB Tablet ZA400039AU**
4. Create an art journal as a log of your reading and win a prize!

All presentations will be made during Children's Book Week in August!



July School Holiday Activities at Bombala Library



FRIDAY 12 JULY

School holiday movies – bookings essential
10:00am
Please see library staff for session movie titles



FRIDAY 19 JULY

School holiday movies – bookings essential
10:00am
Please see library staff for session movie titles



THURSDAY 18 JULY

2:00pm - 4:00pm LEGO Play
Bookings essential!



(02) 6458 3196

63 Maybe Street, BOMBALA



What's On

What's coming up at the N/H

Thursday the 25th July will be Computers for the community and we will also have a community lunch, please come along and join us.
The Library will also be back that day.

For sale

**4.5 metre Caravan, single wheel, good to tow , good condition inside and out.
\$2,000**

Contact Russell— 64580287.

Errinundra to Snowy District Community Representative Group

Next Meeting: 17th July

Time: 10.00– 2.00

Where: Bonang Hall

Friends of Errinundra AGM

**Sunday 28th July from 12.00–
4.00pm at the Bonang hall.**

Please bring a plate. Ed Hill as guest speaker will talk about the Emerald Link and the sea to summit walk and let us know how the planning for the walk is going.
All Welcome.

Markets

Bairnsdale Farmers Market

1st Sat of month
Next market 6th July 8.00am

Paynesville Farmer & Makers Market

4th Sat of month
Next market 27th July 8.30-1.30

Howitt Park Market

4th sun of month
Next market 28th July 8.00-1.00

Wyndham Village Market

4th sun of month
Next market 28th July 8.30-1.00

Merrimbula seaside Market

3rd Sun of month
Next market 21st July 8.00-12.30

Eden local produce Market

3rd Sat of month
Next market 20th July 10.00-2.00

Pambula Market

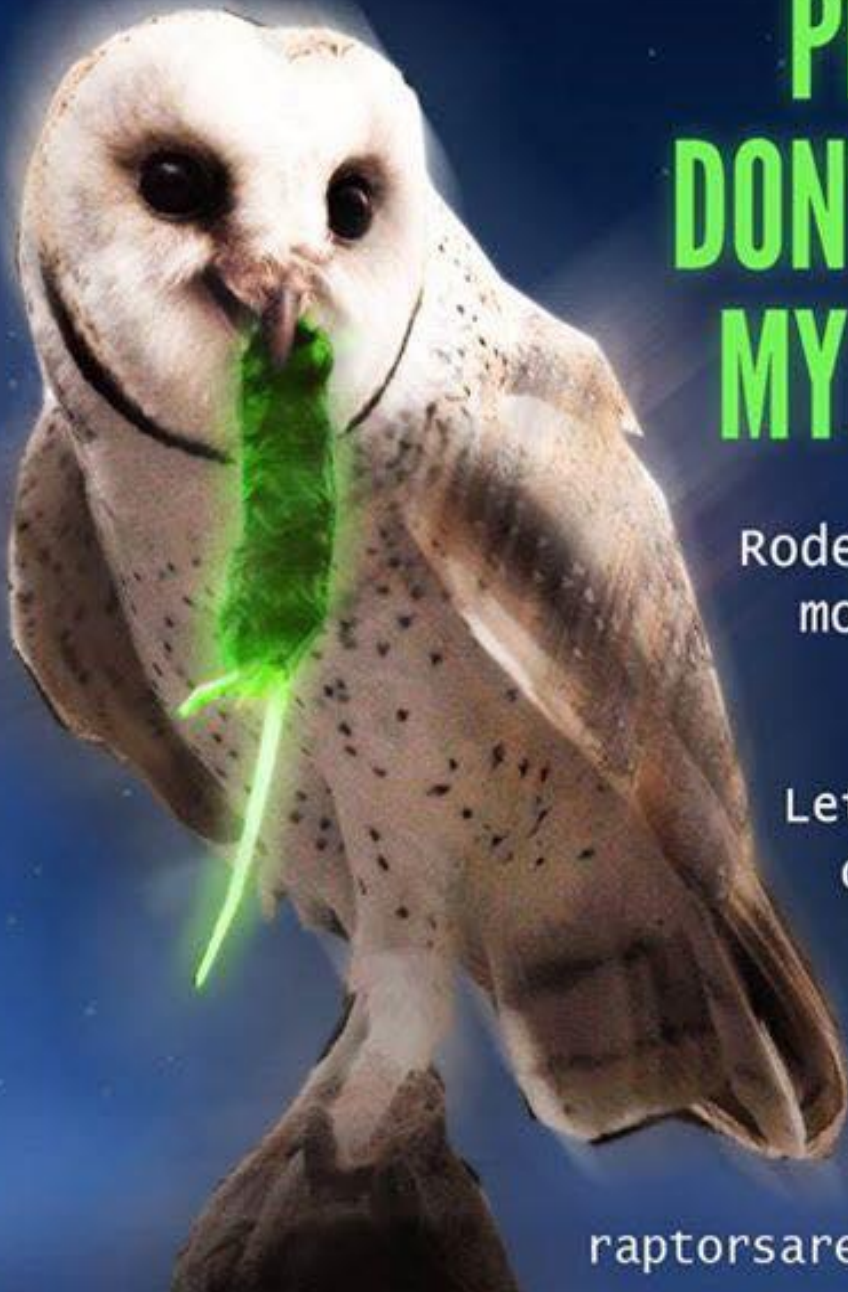
2nd Sun of month
Next market 14th July 8.00-1.00

Candelo Market

1st Sun of month
Next market 7th July 8.30-12.30

Wildlife

**IN ONE YEAR I WILL
EAT 1,000 RODENTS.**



**PLEASE,
DON'T POISON
MY DINNER.**

Rodenticides kill
more than just
rodents.

Let birds of prey
do their job.



raptorsarethesolution.org

From the Readers

IN A RUT - by Can I Dodgem

It is some years now since I came to Deddick

It's a place that many don't know.

It's a place you can swim in the river each night

Travelling is uncomfortable though.

The rainfall is something terrific, it always rains twice every year

The first time you think it's just happened by chance, the second it's *open the beer*.

The road is really terrific, potholes they are something to see

Four cars were lost in a pothole last week, when searching we only found three.

The rocks well they are rather tremendous, sometimes moved by the travelling folk, but seen by the road engineer.

Guide posts they say were once here, there's a few still standing today.

Corrugations galore on the cambers and more, does surely amaze and dismay.

Then there's the trees that have fell by the wayside, perhaps they came down in a storm.

They have to be moved in the dead of the night cause in daytime it's always too warm.

They say there's a move by the locals to open the Old Gippsland track, the surface is fair and of course no expense if the council would just have it back.

So after you've read all of this rubbish and seen all our woes on display. Tis a possible hope in place on the slope that the road will be fixed up by May.

By Murray Mustard



Working Dogs-an Australian Icon

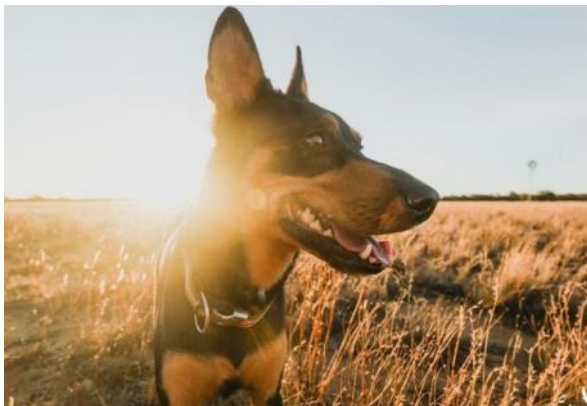
Few images are ingrained in the national psyche like that of the farmer and their loyal canine sidekick.

And with more than 270,000 stock-herding dogs working across rural Australia, they are far more than just a figment of our collective imagination. Dog historian, behaviourist and author of *The Dogs That Made Australia*, Guy Hull, said working dogs were critical to the day-to-day running of farms. "From managing stock to guarding stock and guarding properties ... dogs can do it all," he said. Breeds like the kelpie and border collie had not just the ability to work, but an instinctive desire to do so, according to Paul McGreevy, a professor of animal behaviour and welfare science at the University of Sydney. "The really, truly, wonderful thing is that they love their work," he said. "We have selected dogs that love to do this ... they don't see it as work, they see it as a source of joy."

Creating a breed for Australian conditions

Large English bobtail dogs called Smithfields were the first working dogs to arrive in Australia during colonial times, Mr Hull **A five-fold return on investment**

Training a working dog is not a quick process, nor is it cheap, but experts agree the returns are more than worth it. Mr Hull said trainers looked for dogs that instinctively took an interest in sheep, even at a young age. "We'd generally take the puppy down around sheep when they're three or four months old and let them have a walk and see how interested they are," he said. "From there it's quite a long process to train a sheepdog, but once you get them started, most kelpies and border collies, if they're from good stock, instinctively know what to do. "It's just a matter of refining their skills — they're so good at their jobs, they're quite easy to train." He said the price of a working dog, on average, was between \$300 and \$700, with \$25,000 being [the current record amount paid for a kelpie](#),



But that set of skills can be misinterpreted by handlers, leading to mistreatment — intentional or not. Professor McGreevy said there was a misconception that working dogs were driven by a desire to please their handlers, when in fact their primary motivation was love of the job. "The biggest reward for a sheepdog is teaching them to work with sheep — one of the biggest punishments is taking their work away. "It takes a certain sort of handler to know they are getting joy from their work." There would be other people who imagine the dog has the work ethic to want to please the owner. "That's an unfortunate train of thought, because if the dog makes a mistake, people who hold that view will construe that the dog is trying to annoy them. "If people think the dog is trying to annoy them or being defiant, they tend to escalate force." He said the concept of dogmanship — a person's ability to interact with and train dogs — needed to be more highly valued. "It would be wonderful if we had industry backing for courses in dogmanship that combine the need to read and train the dog correctly ... and then take that better understood partnership into the field or paddock or into the yard.



Working Dogs cont...

"Mr Hull said while the partnership between farmer and dog was generally one of respect, there was also "a big falsity that working dogs need to be treated in a spartan manner". "That's not right — the more they have a life at home with humans, the happier dog and the better worker they're going to be," he said. Professor McGreevy said the fact dogs were living, sentient beings was a key reason they were so good at their jobs. "It can often think for itself and do a better job, even when it's not being guided and instructed by a human." He added: "We, and many of our respondents we've spoken to, don't see the dogs as a tool. "They see it as a companion and a work colleague; it's quite an intimate, personal relationship people have with their animals."

But stock managers, including a cattle farmer named Thomas Hall, soon found the breed unsuited to the conditions and set about creating a local dog. Hall imported some of his family's blue-speckled drover's curs from Northumbria and crossed them with dingoes — [creating the Hall's heeler](#). "That was in 1832 — we had our first locally produced working farm dog," Mr Hull said. Hall's heelers were an early forebear of the Australian cattle dog, and by the 1880s the kelpie had also been developed. Kelpies, along with border collies and Australian koolies, had since become our most popular working breeds, Mr Hull said.

By [Eliza Buzacott-Speer](#)

Kitchen and Cooking



Cooking is the single largest cause of fires in the home. A fire in your kitchen can cause extensive damage to your home, but more importantly, can cause serious injuries and burns. Here's some information to help you stay safe:

Pay Attention

- Always supervise children, keep them away from the stove top, oven and any hot or steamy surfaces or liquids
- Keep pot handles turned so children can't reach them
- Keep your cooking area clean and free from grease, dust and oil - This includes your stove top, griller, oven and range hood
- Never leave cooking unattended - If you must leave the kitchen, turn cooking appliances such as the stove, griller and microwave off
- Make sure kitchen appliances are clean and in good working order
- Tea towels and paper towels catch fire easily and must be kept away from cooking and heat sources
- Don't cook wearing clothes with loose fitting sleeves as they can catch alight if dangling over a flame
- Never use water to put out fat or oil fires - You risk serious burns and can spread the fire rapidly
- Never carry pans of hot or burning oil, this is dangerous, you could get seriously burnt and spread fire.

Fire Extinguishers and

Fire Blankets

You should always have a fire extinguisher and fire blanket within easy reach but away from your immediate cooking area.

Victorian Fire Services recommend that you only use a fire extinguisher or fire blanket if you know what to do and feel capable of using the equipment safely.

If a kitchen fire occurs and you don't feel confident to put it out safely, switch off the appliance (if it is safe to do so) and leave the premises immediately. Only when you are safely out of the building, call Triple Zero (000).

If able to, turn off gas and electricity at the external meter.



cfa.vic.gov.au

Local History

Continued from last month. Diary owned by Alan Neven. Calligraphy by M.Guy 1981

June -

- 5 I have dam well under way - about four more days will complete but unfortunately one horse sick so will have to postpone until later in year. Ran out forty traps but rabbits caught very light. Am undecided whether to continue or not. Price a bare 2/- lb. Am making determined effort with house in afternoons.
- 21 house looking better. I have to put roof on and am preparing joists for floor. Work is very slow with the bush timber but looks like being a pretty good job.
- 23 scrubbed a small area of burnt country near hut and also fence line between no 11 and Don Ingram's block.
- paid following - driving £10-0 sheep dog £2-0-0 horse hire £10-0 credit E.B. Willis with above and R.H. Willis with £5-0-0 against sheep purchase of 1 brown mare £3-0-0 horse feed £2-2-5 not yet met.



July

- 15 since last entry have completed fence round cultivation 16 chain to stage ready for netting as well as stock work and various odd jobs on finishing of house.
- 17 commenced clearing line for erection of fence $1\frac{1}{4}$ miles on west boundary and $1\frac{1}{4}$ miles of subdivision to enclose a further 500 acres of land.
- 28 have completed about $\frac{1}{3}$ of clearing necessary for proposed fence.
- period 16 June to 15 July planted ten fruit trees.



Local History

September

- 1 took W. Wilson's ram. expect lambs from this date. rabbit trapping at T.B. Wilson's a tucker job unfortunately skins only 6^d per lb owing to war so profit rather small sold 66 lb a further 20 lb to be sold
- 3 resumed line clearing for fencing of 500 acres
- 4 five rams C.H. Hickford
- 13 hired horse from tubbut to cultivate small paddock for lucerne cultivation not the best as ground should have been fallowed the first ploughing in May worked up very well however will sow the lucerne seed when to hand cost of seed £2.0.0 super. horse and feed 15/-
- 18 harrowed cultivation with sheep major portion broke down well grass growing very well but sheep not doing as well as they should on feed available shall drench with nicotine and sulphate as soon as I can build a drenching race into existing yards will start job tomorrow
- 19 commenced addition of drafting race to yards lucerne seed arrived
- 20 sowed lucerne seed and covered with large green bough used as harrow
- 21 completed drenching race all but gates will leave timber to season for a while mustered sheep 86 all told 75 merino wethers 6 merino ewes of mine 3 rams of C.H. Hickford taken in on 4 September 2 rams W. Wilson taken on 1 August 62 points rain last night I judged lucerne sowing just right
- 24 drenched my sheep with blue nil nicotine and copper sulphate 1 oz
- 25 more line clearing shall start sinking postholes on Wednesday before ground gets dry and hard
- 27 lucerne seems to be germinating alright have not yet put on super and will wait now until the leaf forms as it may burn if applied now commenced sinking postholes going well after rain
- 28 still sinking postholes



OCTOBER

- 13 mainly fencing since last entry
- 14 Dad and Mr Allan arrived
- 23 Dad and Mr Allan left today and I moved into house after completing chimney found missing sheep dead making losses for six

months 2 sheep dead and two killed for rations shall be shearing 76 sheep this week

- 26 continued fencing
- 27 mustered drover took sheep to shearing shed started shearing about 4 pm
- 28 all sheep shorn early today two bales wool estimated weight 575 pounds brought sheep back also Hickford's ram split posts for fence of horse paddock for which holes sunk last week resumed sinking post holes on boundary fence

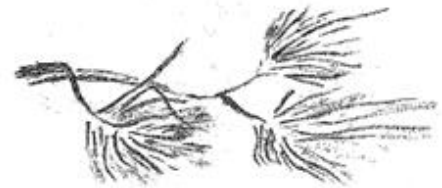
Local History

NOVEMBER

- 5 completed sinking postholes for fence of 500 acres
- 11 wet week approximately 4 inches working on horse paddock fence when possible commenced employing clive legg to assist

in fencing 500 acres Brumby mare dropped foal by half breed clydesdale

commenced splitting posts for 500 acre paddock fence have split some 200 posts legg left today will return after shearing completed fence subdivision 250 acres 7 chains 6 wires 150 posts standing in 500 acres have been alternately ringing in 250 acres and boring posts so done



DECEMBER-14

- purchased roan gelding £4.0.0 j. mead commenced work at £2.0.0 and keep splitting posts paid j. mead £4.0.0 have now split all posts and have some 350 posts standing
- 21- left for lakes entrance



Local History

January - 1940 -

Returned from lakes entrance on 9th took sheep to Ted Ingrams for dipping collected 2.0 shares best of £50.0 and paid into Bank £3.15.0 already collected and paid to C. Mathews for Brown mare total £8.15.0 £6.00 agistment sheep £2.15.0 E.B.W. account attended sheep sale in Delegate purchased 36 fide and six year old ewes even line strong wool merino at 10/- head Fred Minchin drove them to Bonang spent one day standing posts then rode to Bonang for sheep drove them from F. Minchin's place home all landed sheep had belonged to C. Manning Snodgrass lost one wether at dipping time and one died recently total count 162 now sheep have slight touch of pink eye am treating with Boracic twice weekly attended Cabanandra sports

February

erected netting round lucerne which is doing fairly well but rather patchy should be alright next year mustered sheep for treatment standing posts again not very many more to do



March

since last entry have been working on fence every available hour another three days will make this fence at least sheep proof and I hope to have the sheep out there by the end of next week things are very dry and stock starting to fall away but rain should not be far away two sheep have died since last entry and one blind wether slaughtered for dog's meat total sheep on hand 160 I have purchased a further 65 two and three year old merino ewes at 17/- arranging finance with Dalgetty & company £55.5.0 one ewe dead today cause unknown probably impaction as feed very dry total now 159 packed balance of netting into fence line completed standing netting into fence line total area now enclosed with sheep proof fence approximately 700 acres took delivery of new ewes and placed them in number 2 paddock total sheep now 79 wethers 149 ewes mustered sheep in number 1 and treated with zinc sulphate for pink eye started ringing and clearing up odd patches of apple box and string bark in number 1 took Brown mare away and turned out in bush behind Bass Block feed and water excellent took delivery of 36 mixed sex one year old sheep at 10/- head from C. H. Hickford finance from Dalgetty & company put with others in number 2 put in two days ringing no rain yet country very dry stock doing better since they were put on new country



News from the Departments

East Gippsland conservation works in full swing

Ongoing efforts to control feral pigs

02 July 2019: Since the start of autumn, Parks Victoria in conjunction with Moogji Aboriginal Council East Gippsland Inc. have been undertaking numerous programs to monitor and control the feral pig population in East Gippsland through the “Pigs on the Borderlands” project.

Throughout June, poison baiting was conducted by Moogji Aboriginal Council East Gippsland Inc. in locations east of the Snowy River. The uptake of baits by feral pigs in these areas has proved to be successful with visible signs of the feral pigs at the free feeding area.

In addition to baiting, a number of feral pigs were trapped to the west of the Snowy River in the Suggan Buggan area and the eastern Alpine National Park.

The program will increase in size and scale across the Alpine and Snowy River National Parks until 2021.

From September onwards, Moogji Aboriginal Council East Gippsland Inc. feral pig baiting and trapping programs will also be expanded to the east across the Deddick Valley and Tubbut regions.

Other control methods such as ground and aerial shooting may be considered.

Feral pigs significantly impact on biodiversity values and degrade habitat by creating wallows, eroding streambanks, causing disturbance and eating native plants and animals. They also damage agricultural land and spread diseases to humans and other animals. Feral pigs are highly mobile animals which makes the management of them complex and resource intensive.

This feral pig control project has been funded by the Victorian Government’s Biodiversity Response Planning program and is helping to ensure that Victoria’s biodiversity is healthy, valued and actively cared for.

Quotes, attributed to Parks Victoria District Manager East Gippsland Will McCutcheon

“Feral pigs pose a significant threat to many of the natural and cultural values and assets within East Gippsland.”

“Parks Victoria is proactive in managing the threat of feral pigs within the land we directly manage, as well as working with other partners, including the local agricultural industry, as feral pigs can cause damage to pastures, fencing, infrastructure and are known for predation on lambs.”

Quotes, attributed to Moogji Aboriginal Council East Gippsland Inc Project Manager Chris Allen

“Moogji Aboriginal Council East Gippsland Inc. is excited to be a partner and contractor with Parks Victoria on the Pigs on the Borderlands Project.”

“Moogji have invested heavily in training and capacity building of our Natural Resources Management team to reduce feral pig populations in the high country and Far East Gippsland. We have developed cooperative relationships with both Land Managers and private land holders alike to achieve positive outcomes.”

“This project has provided the opportunity for Aboriginal employment and for Aboriginal people to play a major role in ‘caring for country’. The control of Feral Pigs is critical to maintain Biodiversity values in the region.”

For more information please contact:

Name Melanie McVey-Di Lazzaro, Communications Advisor Eastern Victoria

News from the Shire

Council adopts revised Council Plan, Annual Budget

For immediate release — Tuesday, July 2, 2019

East Gippsland Shire Council's Revised Council Plan 2017-2021 and Budget 2019-20 were adopted at its June 25 Council meeting.

Mayor Cr Natalie O'Connell said the revised draft budget adopted by Council was different to the original draft budget put out for consultation.

"Council responded to early feedback on the draft budget regarding the impact of new property valuations across the three classes of rateable properties, particularly for the farm class of properties. As a result, Council released a revised draft budget that provided a more even distribution of rates and municipal charge increases across all rating classes – residential, commercial/industrial, and farm," Cr O'Connell said.

The adopted budget applies a differential rating system. Residential properties pay 100 per cent of general rate, commercial/industrial properties pay 143 per cent of the general rate (down from 145 per cent in original draft budget), and farming properties pay 82.5 per cent of the general rate (down from 90 per cent in the original draft budget).

The adopted budget will see an average increase in rates and municipal charge of 2.52 per cent for residential properties, 2.39 per cent for commercial/industrial properties, and 2.45 per cent for farming properties.

"We received 46 submissions on the revised draft budget and I thank those individuals and groups for taking the time to contribute to this important process," Cr O'Connell said.

Council has also complied with the Fair Go Rates System, which caps the average increase of rates and the municipal charge to 2.5 per cent.

This year's budget includes a \$45.6 million capital works program, with some projects highlighted below:

- **Roads (\$13.857 million)** – including road reseal program, shire-wide - \$4.160 million; gravel resheet program, shire-wide - \$1.5 million; upgrade of Pearson Street, Bairnsdale - \$2 million; safety improvements on Scriveners Road, Lakes Entrance - \$1.688 million;
- **Bridges (\$3.708 million)** – including Timbarra Bridge, Timbarra - \$1.357 million; Sandy Flat Road Bridge, Orbost - \$981,000;
- **Drainage (\$2.190 million)** – including Jones Bay McMillan Street, Bairnsdale - \$570,000; Gully Road, Lake Tyers Beach - \$500,000;
- **Footpaths and Cycleways (\$2.370 million)** – including Omeo mountain bike trails, Stage 1 - \$1.350 million; Eastwood Great Alpine Road path - \$500,000;
- **Buildings and Improvements (\$3.581 million)** – including building renewal, shire-wide - \$950,000; new pavilion, Mallacoota Recreation Reserve - \$1.013 million; East Gippsland Livestock Exchange upgrades \$400,000;
- **Recreation, Leisure, Parks and Open Spaces (\$5.119 million)** – including Lucknow Recreation Reserve upgrades - \$1.005 million; Lakes Entrance streetscape pavement improvements - \$800,000; Orbost streetscape - \$500,000;
- **Plant and Equipment (\$7.272 million)** – including renewal of vehicles, plant and machinery - \$4.040 million; information and communication technology systems - \$2.863 million;
- **Waste Management (\$3.162 million)** – including upgrades to transfer stations at Marlo, Swifts Creek and Metung \$840,000; Lakes Entrance Transfer Station upgrade - \$1.5 million;
- **Other Infrastructure (\$4.367 million)** – including Lakes Entrance seawall replacement - \$1.350; East Gippsland Livestock Exchange sheep pens \$850,000; Jemmys Point lookout, Lakes Entrance \$750,000.

News from the Shire

Continued from previous page

“Council has also allocated \$500,000 to social and economic activities to support the community during the drought. This budget will help Council achieve our vision for the future of East Gippsland, as detailed in our Council Plan 2017-2021. The Council Plan was reviewed and released for public consultation to ensure it still met the aspirations of our community,” Cr O’Connell said.

Chief Executive Officer Anthony Basford said the budget was developed with a focus on maintaining existing services levels, while continuing to deliver a proactive asset renewal program and ensuring council’s longterm financial sustainability.

“Council is conscious of the need to be as efficient with its resources as possible, while maintaining assets and providing the services the community needs. Our indicators show this budget maintains council in a financially sustainable position to deliver the aims in the Council Plan,” Mr Basford said.

The Annual Budget 2019-20 and revised Council Plan 2017-2021 can be viewed on council’s website and at its customer service centres.



Let’s talk contracts . . . over breakfast

For immediate release — Thursday, 27 June 2019

Local contractors and business operators are invited to participate in East Gippsland Shire Council’s second procurement and tendering workshop – ‘Contractors Breakfast’ – on Friday, July 19 at the Bairnsdale RSL from 7.45-10am.

The breakfast is designed to help local contractors understand the process, and to prepare for tendering for council works. The event is open to contractors not currently working for council, and existing contractors.

If you're a contractor or sell products locally, this forum will equip you with the knowledge you need when going for council or government contracts. There will be a session on writing tenders and an opportunity for contractors to give their feedback on aspects they find challenging.

Attendees will hear from Council’s Acting Director Operations Fiona Weigall about up-coming contract work, Risk Management Coordinator Simon Alleaume about registering on Council’s preferred contractors register, and Workplace Health and Safety Advisor Evan Downie. Council encourages local contractors and businesses to tender for works and services and if they require assistance with the process to contact Council on (03) 5153 9500.

If you would like to submit a question before the forum, email Marlene Rickhuss at economic.development@egipps.vic.gov.au. Bookings for the July 19 breakfast can be made at trybooking.com and tickets are \$25 (including breakfast and morning tea).

July 2019

Mon Tue Wed Thu Fri Sat Sun

1	2	3	4	5 NSW school holidays start	6	7
8	9	10	11	12	13	14
15 VIC school returns	16	17 Errinundra to Snowy Rep Comm meeting	18	19	20	21
22	23 NSW school returns	24	25 Computers with Sharon Library Bus Community lunch	26	27	28
29	30	31				

**The Road Safety Committee of the Errinundra to Snowy representative group
invites you to complete this survey of attitudes to
THE SAFETY OF OUR DISTRICT ROADS**

Please indicate how often you use our road network (occasionally = less than once a month, regularly = more than once a month, if never leave blank)

	Occasionally	Regularly
Bonang Road		
McKillops Road		
Bendoc Gap Road		
Dellicknora Road		
Haydens Bog Road		
Other Roads (Please name)		

Of the above roads, in respect to maintenance and safety over the last 5 years, which have **Maintained standards?** (please list)

Declined in standards? (please list)

Off the above roads,
Which do you consider are unsafe to drive on presently? (please list)

Have you had a vehicle accident in the last 5 years on any of the above roads?

Yes ☐ No ☐

If yes please indicate whether

Minor ☐ Major ☐

Can you give cause of the accident? _____

Have you had a near accident, eg. Losing control of your vehicle due to deep corrugations, sinkholes, soft edges or gravel windrows?

Yes ☐ No ☐

If yes, please describe _____

Over the last 2 to 5 years do you think your vehicle/s have suffered increased wear and tear on our roads, eg tyre wear and tear, suspension, extra rattles, extra fuel use, etc?

Yes ☐ No ☐

Can you estimate the extra damage? \$_____/100 km

Would you advise visitors and tourists to stay off our roads or use an alternative route, such as Cann Valley Hwy?

Yes		No	
-----	--	----	--

Do you take an alternative route where possible, to avoid certain roads?

Yes		No	
-----	--	----	--

Roads you avoid, if yes to above question _____

Do you have a CB radio in your vehicle when you travel?

Yes		No	
-----	--	----	--

Does it help to avoid oncoming traffic?

Yes		No	
-----	--	----	--

Can you name any particular dangerous hot spots (name road and location)

When you use our district roads are you a resident?

Full time		Part time	
-----------	--	-----------	--

Visitor	
Tourist	
Work contractor	
On official business	

What is your age?

18-25	
26-45	
46-65	
Older	

Comments:

Thank you for completing this survey. To return it, either drop it back to the outlet where you found it, or post it to Tubbut Neighbourhood House 2584 McKillops Road Tubbut 3888

Queries: Bob McIlroy 0490829955

Tubbut Neighbourhood House 02 64580295